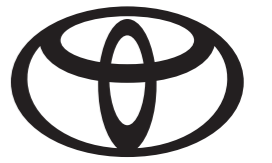


STYLED FOR YOUR STYLE



NEW TOYOTA YARIS



Disclaimer: Toyota Motor Philippines Corporation reserves the right to change the vehicle specifications without prior notice. Vehicle featured is Toyota Yaris S Variant.



STYLED FOR YOUR STYLE

An eye-catching ride with new features designed to be shown off. Finally, a ride that suits your style: The New Toyota Yaris.



1.5L ENGINE*
With the 1.5L Engine, you can have a fuel efficient drive



CONTINUOUS VARIABLE TRANSMISSION (CVT)
Enjoy seamless shifts between gears with Continuous Variable Transmission (CVT).



ECO AND SPORT DRIVE MODE*
The Toyota Yaris comes with Eco and Sport Mode for fuel efficiency and performance acceleration. Perfect for whatever driving mood you're in.

*Available for S variant

STYLED FOR LOOKS

Make any road yours with a drive styled for your style.



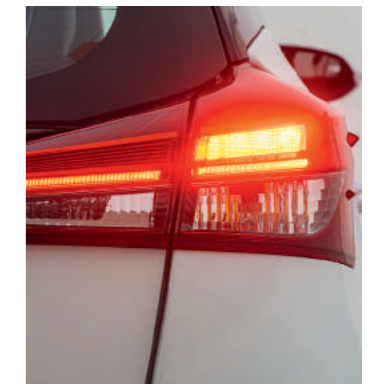
LED HEADLAMPS*
The new headlamps of the Yaris were redesigned to accentuate the Daytime Running Lights, and lead your way in style.



FRONT LED FOGLAMPS
The combination of fierce and function. While the revamped foglamps look better than ever, it also improves visibility. Especially in situations where mist, fog, and dust are present on the road.



NEW FRONT GRILLE DESIGN
The Yaris' sleek, new front grille will definitely get you all the attention on the road.



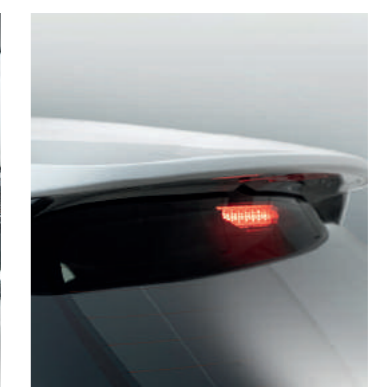
REAR COMBINATION LAMPS WITH LED LINE GUIDE*
The Yaris' LED Rear Combination Lamps provide an awe-inspiring balance of sleek design, and effective function.



REAR FOGLAMPS
The Rear Foglamps were made to make your presence known to other drivers to keep you, and those around you, safe while on the road.



DAYTIME RUNNING LIGHTS*
Strikingly appealing upon sight, the Toyota Yaris' Daytime Running Lights also enhance safety with better visibility even in broad daylight.



REAR SPOILER
The Yaris' Rear Spoiler is a designer touch to give your ride an added bit of style and personality.

*Available for S variant

STYLED FOR FUNCTION

Enjoy up-to-date features styled to fit your driving style.



SYNTHETIC LEATHER SEATS - NEW INTERIOR TRIMS*
The Yaris' new interiors are made to match its stylish new exterior so you can drive in style.



PADDLE SHIFTER*
Conveniently placed behind the steering wheel, the Paddle Shifters give your gear shifting a sportier, manual feel. Especially during overtaking maneuvers.



STEERING WHEEL SWITCHES
The steering wheel in the new Yaris is designed for you to easily maneuver. It also has audio switches, so you can quickly turn the volume up or down.



PUSH START SYSTEM*
With the Push-Start System, you can get the engine running instantly with just a quick press of a button.



APPLE CARPLAY & ANDROID AUTO
With Apple Carplay and Android Auto, you get up-to-date tech that fits your needs for a more customizable and convenient drive.



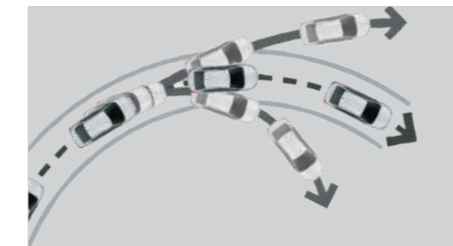
SMART ENTRY*
With Smart Entry, getting in the Yaris has never been this easy and convenient. Even with the key in your pocket, it allows you to lock and unlock your car just by touching the door handle.



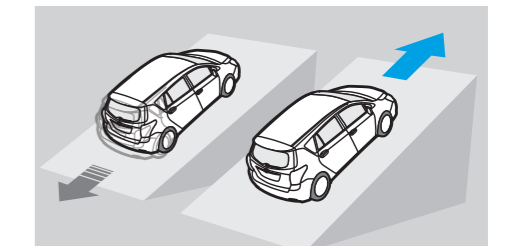
STYLED FOR SAFETY



ANTI-LOCK BRAKING SYSTEM
Gives you the safety margin of being able to steer during sudden hard braking by preventing your wheel from locking up.



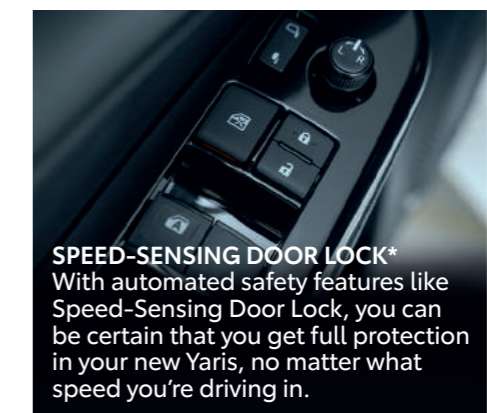
VEHICLE STABILITY CONTROL
Keeps you safe by helping you prevent side skids, and assists in stabilizing the car when abruptly turning on a tight curve.



HILL START ASSIST
Safely advance from a full stop, with ease, when you're going uphill with the Hill-Start Assist Control.



SRS AIRBAGS
As a true class-leading hatchback, the Toyota Yaris cocoons you and your passengers in utmost safety with numerous airbags.



SPEED-SENSING DOOR LOCK*
With automated safety features like Speed-Sensing Door Lock, you can be certain that you get full protection in your new Yaris, no matter what speed you're driving in.

*Available for S variant

*Available for S variant

VARIANT	1.5 S CVT		1.3 E CVT	
OVERALL DIMENSIONS				
Length x Width x Height	mm 4,140 x 1,730 x 1,500			
ENGINE & TRANSMISSION				
Model	2NR-FE		1NR-FE	
Type	4-cylinder, In-line 16-valve DOHC, Chain Drive (with Dual VVT-i)			
Displacement	1496		1329	
Max Output	PS / Rpm	107 / 6000	99 / 6000	
Max Torque	Nm / Rpm	140 / 4200	123 / 4200	
Fuel Type	Gasoline			
CHASSIS				
Suspension	Front	MacPherson Strut Type		
	Rear	Torsion Beam Type		
Brakes	Front	Ventilated Disc		
	Rear	Solid Disc	Leading-Trailing Drum	
Tires / Wheels	185/60R15 Alloy			
EXTERIOR				
Headlamps	3-tier LED		4-Bulb Halogen	
Daytime Running Lights	LED Line Guide		-	
Front Fog Lamps	LED			
Outside Rear View Mirror	Power Features	Power Adjust + Power Fold	Power Adjust	
Side Turn Signal Lamp	Outside Rear View Mirror Integrated		Fender	
Front Grille	Plating + Color		Color	
Windshield Wiper	Front	Intermittent + Time Adjust		
	Rear	With		
Rear Window Defogger	With			
Rear Combination Lamp	LED w/Line Guide + Bulb		Bulb	
Rear Spoiler	With			
Door Outside Handle	Chrome		Color Keyed	
Antenna	Fin Type			
INTERIOR				
Seat Material	Synthetic Leather		Fabric	
Seat Type and Adjustment	Front	D: 6-Way Manual Adjust / P: 4-Way Manual Adjust		
	Rear	60/40 Split Folding		
Instrument Panel and Center Cluster	With Satin Silver Accents		With Dark Silver Accents	
Meter Cluster	Optitron			
Multi-Information Display (MID)	Segment			
Economy Meter	Eco Lamp			
Steering Type	Electric Power Steering			
Steering Column	Tilt			
Steering Wheel	Material	Leather	Urethane	
	Paddle Shifter	With	-	
	Switch	Audio + Bluetooth		
Inside Rear View Mirror	Day & Night			
Sun Visors	D: Ticket Holder + Mirror / P: Mirror			
Inside Door Handle	Dark Silver		Chrome	
Cup Holder / Bottle Holder	Front	Cup Holder: 2 + Bottle Holder: 2		
	Rear	Bottle Holder: 2		

VARIANT	1.5 S CVT		1.3 E CVT	
FUNCTION				
Keyless Entry	Smart Entry		With	
Ignition System	Push Start System		Rotary Type	
Drive Mode Select	Eco + Sport		-	
Power Features	Windows	Front and Rear with D: Auto Up/Down + Jam Protect		
	Door Locks	With Driver Side + Speed-Sensing	With Driver Side	
Airconditioning System	Front	Auto		Manual Dial
Light Control System	With, Follow Me Home		-	
Audio System	Type	6.75" Display Audio		
	Smartphone Connectivity	Apple Carplay + Android Auto + Smart Device Link (SDL)		
	Function	AM/FM/AUX/Bluetooth/USB/Voice Command		
	Speakers	6	4	
Accessory Outlet (12V)	With			
SAFETY & SECURITY				
SRS Airbags	Driver + Front Passenger + Side + Curtain Shield + Knee (D)			
ABS (Anti-Lock Brake System)	With + Brake Assist + EBD			
Vehicle Stability Control (VSC)	With			
Hill-Start Assist Control (HSA)	With			
Seatbelts	Front Seats	3 pt. ELR + Pretensioner + Force Limiter		
	Rear Seats	3 pt. ELR: 3		
Seat Belt Reminder	Driver + Front Passenger			
Child Restraint System	ISOFIX: 2 + Tether Anchor: 2			
Child Protection Lock	With (Rear)			
High Mount Stop Lamp	LED			
Toyota Vehicle Security System (TVSS)	Alarm + Immobilizer		Alarm	



CYAN METALLIC



CITRUS MICA METALLIC



SUPER WHITE II



RED MICA METALLIC

